

KASHIPUR

ELECTRICALS

• MANUFACTURING

• TRADING

• SERVICES



KASHIPUR ELECTRICALS

(ELECTRICAL PANEL BUILDER & TRADERS)

Shubash Nagar, Near Naher ki pulia, Kashipur Uttarakhand-244713

Web: www.kashipurelectricals.co.in Email-kashipurelectricals@gmail.com

Introduction

- **Kashipur Electricals** is a paramount Electrical Contractors & LT Panel Board Manufacturer, operating across the highly industrialized states of India. Established and providing electrical services since 1986. **Kashipur Electricals**, a humble entrepreneurial endeavour of a group of young technocrats under the leadership of **Mr. Amarjeet Singh** renowned organization rendering highly specialized

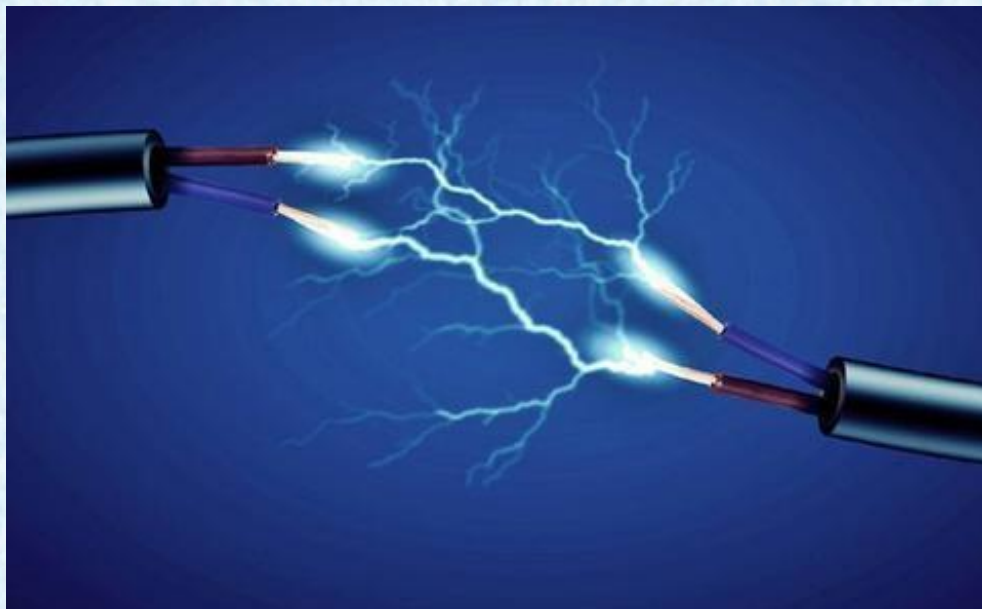


services to a widespread cross-section of Industries and other business establishments.

- **Kashipur Electricals's** diversified range of products includes, LT Panels, Cable Trays (Perforated Type), Air Insulated Bus Duct up to 6300 ampere rating, Servo Voltage Stabilizer & control transformers. We at **Kashipur Electricals**, have a team of highly qualified & experienced engineers expert in the field of designing to introduce ourselves as a specialist in manufacturing of several types of LT Panels like, PCC Panels, MCC Panels, PDB Panels, PLC Based Automation Panels, Automatic Power Factor Control Panels, AMF (Auto Mains Failure) Panels, Synchronizing Panels, Load Management System Panels and many more. **Kashipur Electricals** is known for its excellent quality in manufacturing of Perforated Type Cable Trays & Air Insulated Bus Ducts.
- **Kashipur Electricals** is dedicated to provide all type of electrical services & solutions under one roof, being an **Electrical Turnkey Project Executers, LT Panel Board Manufacturer** we also provide trading services to our clients. Product range of our trading services include **Distribution Transformers, DG Sets, Vacuum Circuit Breaker, Solar Panel, Solar Lights, Solar cables, Solar equipments, Oil Circuit Breaker, HT Cables along with HT Indoor/Outdoor Termination Kit, LT Cables with termination accessories including Copper/Aluminium Lugs & Single/Double compression Glands, Lightings of various applications, Earthings, Lightning arresters and all kind of LT Switchgears.**

Why Kashipur Electricals ?

- All type of electrical services & solutions under “**One Roof**”.
- We are dedicated to quality instead of money; we have the best “**Competitive Offers**” for your projects.
- Work with “**Safe & Zero Defect**” concept in all the operations.
- Advanced PLC based “**CuUng & Bending**” machines for MS-CRCA sheet.
- “**7-Tank Pre-treatment**” process for powder coating.
- Strict “**Quality Check**” at every stage of manufacturing.
- “**Pre-Dispatch Testing**” with advanced equipments by highly experienced engineers.
- Execution of complete project within the committed “**Deadline of Time**”.
- “**Rapid Maintenance & Services**”.
- Consume only “**Branded Material**”.
- “**Deluxe Panel Design**”.



Quality Policy

- Kashipur Electricals work with “**Zero Defects**” concept in all operations to complete the Job. We have involved a number of full-proof systems to achieve this quality policy. Everyone at KEEW remains pledged to meticulously practice the program & procedures in every sphere of activities with the ultimate objective of achieving the prescribed quality standards within the given time schedule.
- We have **CNC Cutting machine, CNC bending machine, Bus Bar cutting, bending & punching machine** to serve our clients with our excellent quality of manufacturing. Our workshop at Kashipur is equipped with **Seven Tank Chemical Pre-treatment Process** for a better quality of Powder coating on LT Panels, Cable Trays & Bus Ducts up to **100 micron** thickness for rusting preventions.
- Every item used in manufacturing of various systems & installations are subjected to strict quality checks prior to use & purposeful stage inspections are invariable carried out at different stages of manufacturing. We of course ensure that every component used is branded & accompanied by necessary test certificates by its manufacturer. Every assignment is executed in strict conformance to the **Electrical Standards & Regulations**.
- It is this answered commitment to the stated quality policy that keeps us in good stead and helps us survive in this highly competitive market.

Manufacturing Products



Over the years we have credentials and experience in the following industries.

- **Paper Industries**
- **Food Processing Industries**
- **Steel Industries**
- **Spinning & Fibre Industries**
- **Polyfilm Industries**
- **Chemical Industries**
- **Agro & Edible Oils**
- **Stone Crushers**
- **Bulb & Lighting Industries**
- **Glass Industries**
- **Leather industries**
- **Hotels & Resorts**
- **Builders & Developers**
- **Hospitals**

Power Control Centre (PCC Panel)

- We manufacture PCC Panels which are used widely in all industries as Main LT Panel, to distribute the main supply incoming from electricity board and generator sets. It also acts as automatic changeover panel between EB & DG Supply. Equipped with ACBs, MCCBs, SFUs or MCBs power is distributed to sub panels as well as different portion of industries or machines.



Motor Control Centre (MCC Panel)

- MCC Panels are widely used in all industries like, Sugar Industries, Paper Industries, Stone Crusher plants, Pharmaceutical Industries, Food Processing & many more industries. A combination of DOL (Direct on line), S/D (Star delta starters) & VFD starters as per the site requirements, MCC Panel is mandatory to be used for safe & reliable operations of all types of motors in industries.



Automatic Power Factor Control (APFC Panel)

- Power factor controlling is the biggest issue widely faced in all industries. Fully automatic as well as manual operation of KEEW make Power factor control panel enables you to increase your power factor up to unity. Use of Heavy Duty cylindrical type capacitors helps you to maintain your power factor to let you enjoy the real power and decrease your electricity bills.



Auto Main Failure (AMF/Synchronizing Panel)

- Tired of switching your DG on & off manually while electricity flickering? Technology enables you to rest assured then why worried? AMF Panel is the awesome solution for all such type of issues faced widely in industries. AMF Panel starts your DG to feed electricity to your plant when Electricity Board fails. If you use AMF Panel then whenever there will be a significant loss or totally blackout of your EB supply then your DG will start automatically within a fixed time limit to rescue potential damages and huge amount of interruptions. AMF Feature can also be provided along with the main LT Panel.



Distribution Board (DB Panel)

- DB Panel corporate as a sub panel to your PCC Panel. As its name indicates its only use is to distribute power to various machines & different parts of plant. DB panel is the most used panel in all types of industries, Hotels, Hospitals, Resorts & Shopping complexes.



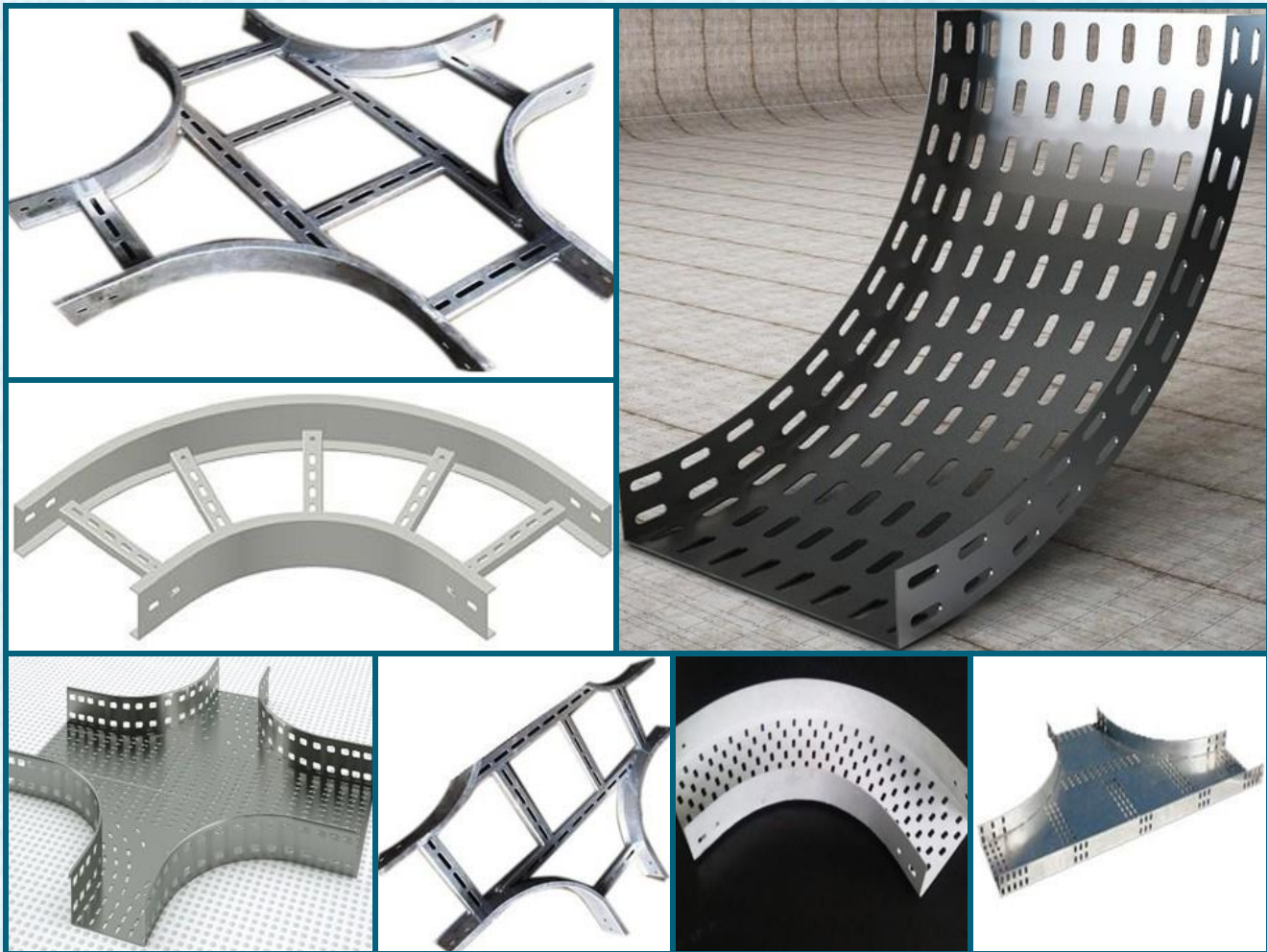
Air Insulated Bus Ducting

- We are manufacturer of TPN or FP Air Insulated type Bus ducts up to 6300A. Bus ducts are widely accepted & installed at large power stations and major Industries. Bus ducts can also be used to feed supply to big machines above the load range of 1000A. But majorly it is used for connecting transformer to the main incoming breaker in Main LT Panel. When transformers above 750KVA are used then using Bus duct is very safe and reliable instead of using many runs of LT cables.



Cable Tray & Accessories

- We are the manufacturer of perforated type cable trays along with bends required for the installation. Cable trays made out of 1.6/2 mm thick sheet, are widely used in industries for laying of cables. Ager using of all the required accessories in installation we are widely serving our clients with our excellent quality. Being a manufacturer we are able to serve our clients as per their requirement i.e. facility of powder coating, use of variety of sheets & varying collar height etc.



Advance Manufacturing Unit

- Installation of advanced CNC based Cutting & Bending machines enrich our manufacturing unit to advance level. Our use of advanced machines operated by qualified & trained professionals enable us to complete any job within the provided deadline of time. Use of such automatic machines instead of other manually operated machines also helps us to improve our quality of jobs and survive in such competitive market. We only use branded material whatever required in process of manufacturing of LT Panel. Some of which are mentioned below:
- Designing of LT Panel through Cad/Cam strictly followed by the client's requirement.
- MS-CRCA Sheet- Tata.
- Cutting of MS-CRCA through Electrically operated computer numeric based cutting machine.
- Bending of MS-CRCA through Electrically operated computer numeric based bending machine.
- Suitable electrically operated cutting, bending & punching machine of Bus Bars.
- Powder coating of designed enclosure through 7-tank pre treatment process.
- Copper & Aluminium conductor Electrolytic Grade Bus Bars with color coded sleeves- Hindalco.
- All control wiring shall be done by copper conductor 1.5/2.5 sq mm 1.1KV grade Industrial wires- KEI/Havells/Finolex.
- Every Panel manufactured at **Kashipur Electricals** will be suitably & necessarily tested by HT & LT testing equipments.
- All wiring & testing processes are executed under the surveillance & guidance of highly educated & trained engineers.



SERVICES

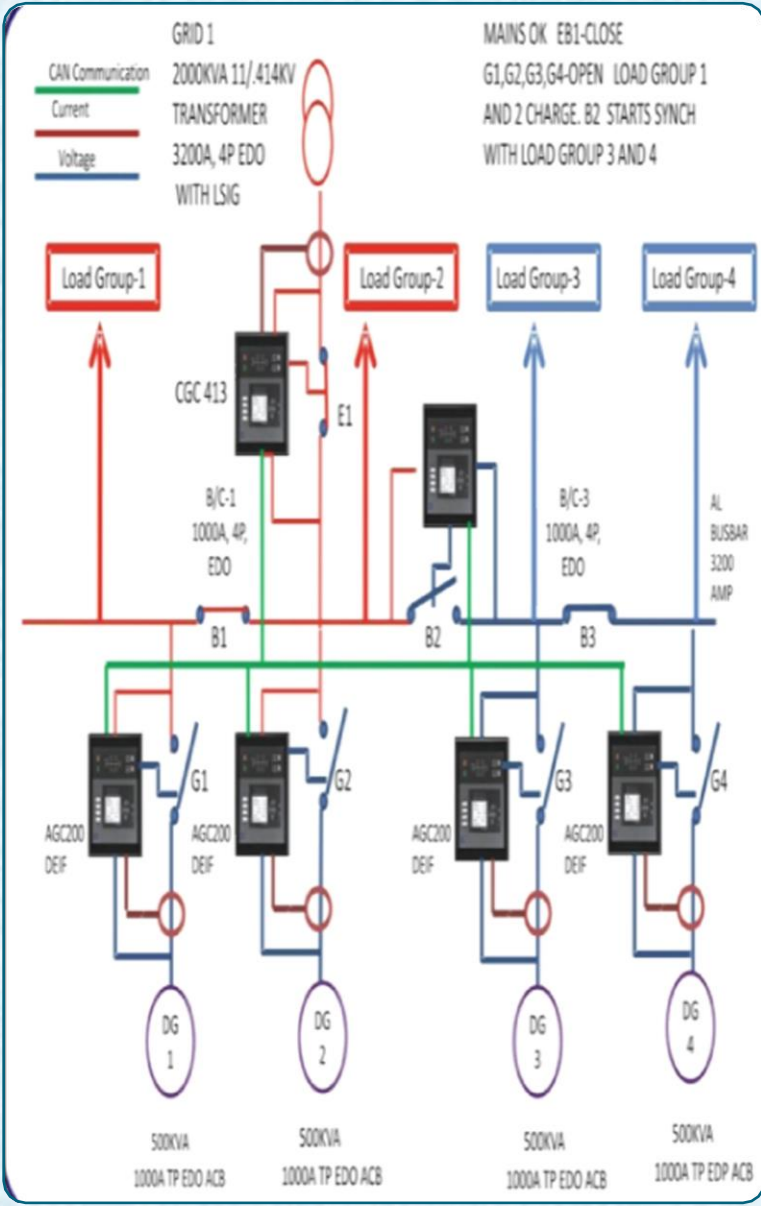
We provide exemplary services at site in the form of H.T. Substation work upto 33 KV and LT Site Work etc. Designing, Engineering, Installation, Testing & Commissioning of 11/33 KV Sub-Station.

- | | | | |
|-----------------------------|-------------------------------|---------------------|------------------------------|
| ACB Maintenance | VCB Maintenance | OCB Maintenance | Transformer Maintenance |
| Servo Maintenance | Motor Maintenance | Starter Maintenance | Electrical Panel Maintenance |
| Company AMC | Transformer Oil Filtration | Technical Men Power | |
| Industrial Turnkey Projects | Industries Emergency Shutdown | | Electric motors Rewinding |

Execution of Projects

Kashipur Electricals is a highly recommended turnkey electrical projects executer in Kumaun region of Uttarakhand, while operating not just in Uttarakhand but across the country. We have a separate team of engineers for the Installation of HT System like, 2/4 Pole structure, GOAB Switch, Meter Cubicle, Vacuum Circuit Breaker, Oil Circuit Breaker, Distribution Transformer as well as all type of LT Panels etc.

- Some more services provided by us in maintenance are mentioned below:
- Transformer Servicing & maintenance.
- Any fault rectification & servicing of VCB.
- Servo repairing & servicing.
- Servicing of ACB & maintenance.
- Motor winding, servicing & repairing.
- Fault rectification & Servicing of LT Panels.
- Transformer/Servo oilfiltration.
- Electrical projectconsultancy.
- Company AMC.
- All type of electrical services required in the process of shutdown.





Trading Products

- Wide range of our trading products includes the following items:
 - GOAB Switches.
 - HT Cables.
 - HT Indoor/Outdoor termination kit.
 - Solar Panels
 - Solar Lights
 - Solar cables
 - Other solar equipments
 - Vacuum circuit breaker.
 - Distribution Transformer.
 - Transformer oil & other equipments.
 - DG Set (Caterpillar/Cummins).
 - LT Cables (KEI/Polycab/Havells/Orbit/Lapp).
 - Copper/Aluminium Lugs.
 - Single/Double Compression Glands.
 - 3 Phase Motors (Siemens/Crompton Greaves).
 - All Type of Switchgears
(Schneider/Siemens/L&T/ABB/Havells/C&S/HPL).
- 

